



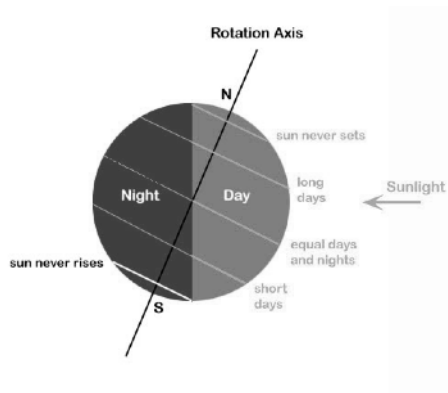
**CALL FOR STREAMERS**

**REVEIL 2018**

Over the weekend of International Dawn Chorus Day, Reveil circles the globe at daybreak in a live radio transmission lasting one earth day.

Starting at Stave Hill Ecological Park near the Greenwich Meridian at 5AM London time (UTC+1), Reveil travels west just ahead of the rising sun, and arrives back at 6AM on Sunday morning after a complete circuit of the globe.

We are calling for streamers to open microphones at daybreak on Saturday 5th and Sunday 6th May. Streams will be featured at [soundtent.org](http://soundtent.org) and will form part of the 5th Reveil. Each one adds to the detail and diversity of the transect.

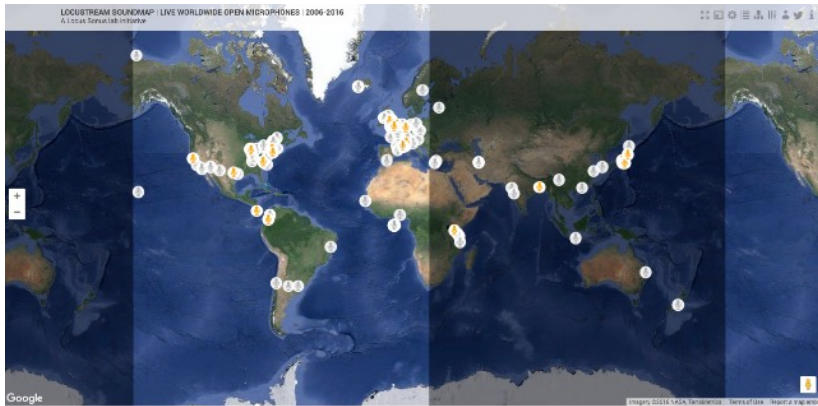


The dawn chorus loops the earth continuously along the line between night and day. Birds and other organisms singing together create a travelling wave of sound at a time when humans are relatively quiet. They are accompanied by weather and machines. Reveil is a chance to be out among these sounds, and share them.

We will pick up streams in the Western hemisphere on Saturday 5th, and streams in the Eastern hemisphere on Sunday 6th May at civil twilight local time.

Reveil is assembled in London by SoundCamp. It coincides each year with International Dawn Chorus Day, a project of the Wildlife Trusts. The main stream is hosted and distributed by Wave Farm in the Upper Hudson Valley, New York. It is broadcast in full by WGXC in the USA and Resonance Extra in the UK, and in whole or in part by a growing number of FM and netradio stations around the world.

Reveil in 2014 was the first broadcast of its kind. Our aim each year is to achieve a fuller, more inclusive account of an extended moment.



Each stream adds detail and diversity to the mix.

To stream live sounds you can use

a Raspberry Pi [streambox](#)

a laptop with [Nicecast](#) or [BUTT](#)

an iOS phone with the [Locuscast](#) app from Locus Sonus

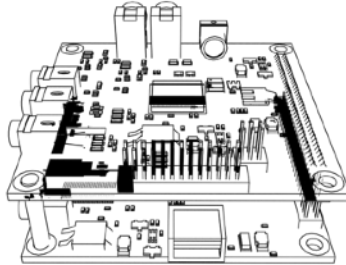
an iOS phone with the Wave Farm [radio app](#)

an Android phone with [Mixlr](#)

Most of these are free

> [Resources](#) for detail

## Streams catalogue



2014

2015

2016

2017

## Next

Contact us with any questions

Set up an account at Locus Sonus

Download Locuscast, set up your streambox, etc

Test

Make a page for your stream > [soundtent.org](http://soundtent.org)

## Contacts

[soundtent.org](http://soundtent.org)

[contact@soundtent.org](mailto:contact@soundtent.org)

[@soundtent](https://twitter.com/soundtent)

[#Reveil2018](https://twitter.com/Reveil2018)



You could stream from a [soundcamp](#)

## About

SoundCamp are an artists collective based in London. We are best known for work on sound and place, especially using live sound links to connect remote acoustic and ecological projects in real time.

Work on Reveil / soundcamp has evolved in close association with partner organisations, especially Locus Sonus and the live open microphone network they pioneered at the Hautes Ecoles d'Art at Aix and Bourges.

We are grateful for support from Sound and Music, Arts Council England, the Heritage Lottery Fund, B3Media, North Southwark Environment Trust, USTSC, SHED, TCV and Southwark Neighbourhoods Fund.

## Images

Streaming with Locuscast and iPhone 5, Manizales Colombia, Balance-Unbalance May 2016, Photo by Grant Smith

Earth's rotation creates night and day. Courtesy of the astrophysics department at Penn State University <http://www2.astro.psu.edu/~mce/A001/lect03.html>

Raspberry Pi with Cirrus Logic soundcard. Wireframe model by Max Baraitser Smith

End of The World Garden soundcamp with Bram Thomas Arnold 4-5-16  
Instax by End of the World Garden / Bram Thomas Arnold

